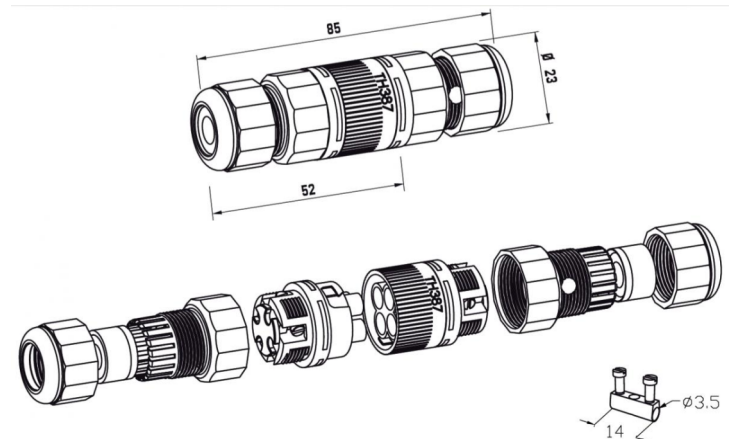
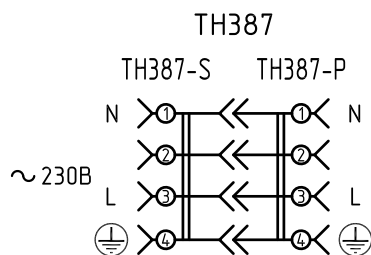


LED luminaire DKU 03-16x2-001 (-01, -02, -03, -04) UHL1 «Light»	
Parameter	Value
Polar luminous intensity curve in a vertical plane	special
Nominal power consumption, not more than, W	40
Luminous efficiency, no less than, lm/W	130
Nominal luminaire luminous flux, lm	5 200
Dimensions, mm	
Recommended mounting height, m	6
Weight, no more than, kg	3,5
Circuit voltage, frequency	176 – 305 V, 50 Hz
Operating temperature, °C	- 45 ... + 60
Degree of protection	
IK code/impact resistance	IP66
Protection against electric shock	IK08
Overvoltage resistance, up to, kV	I
Correlated color temperature, K	6 (optional 10)
Color Rendering Index	4000-5500 (optional 2700-8300)
Power factor, cos φ	> 70
Control system inputs	> 0,97
	DKU 02-16x4-001-01 - BPM
	DKU 02-16x4-001-02 - RF (NEMA)
	DKU 02-16x4-001-03 - DALI

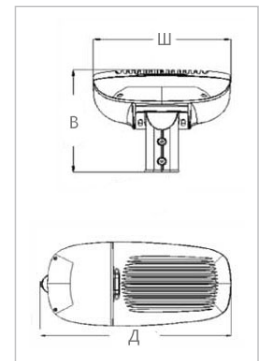
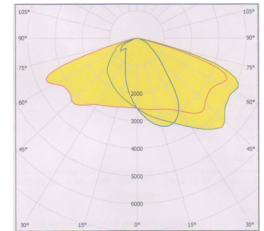
Warranty, years	5
Lifespan, hours	100 000
Body	Die-cast aluminum powder coated in RAL
Lens	Optical stabilized polycarbonate, (optional optical silicone)
Bracket	Universal swivel bracket for pole / console mounting
Cover glass	Tempered float glass
Approval mark	CE, EAC
Accordance to standards	EN 60529:1991, IEC 62262:2002, IEC 62471-2013, EN 60598-1-2013, EN 55015:2006/A1:2007/A2:2009, EN 61000-3-3-2:2006/A1:2009/A2:2009, EN 61000-4-2011, EN 61547-2013, EN 60529:1991, 2014/35/EU, 2014/30/EU, EN 62471:2008, CISPR 15-2014
Light pole diameter, mm	48 – 60
Tilt angle, °	-15 ... + 15
Connection	Techno TH387 (IP68)

CONNECTION OF THE LUMINAIRE



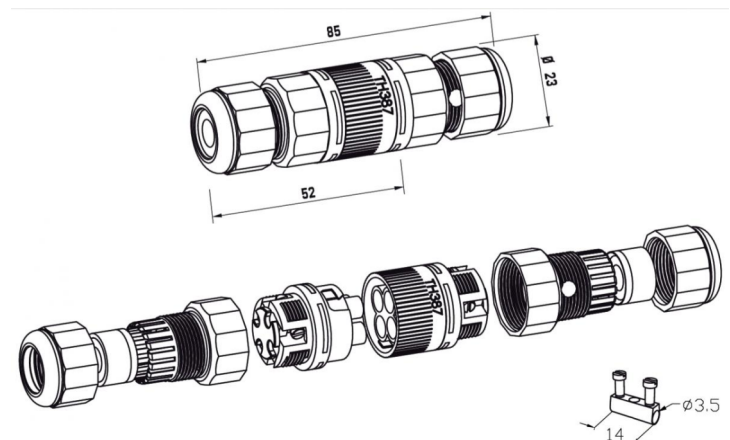
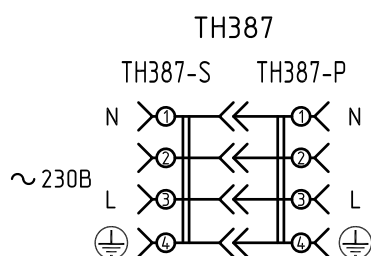


LED luminaire DKU 03-32x2-001 (-01, -02, -03, -04) UHL1 «Light»	
Parameter	Value
Polar luminous intensity curve in a vertical plane	special
Nominal power consumption, not more than, W	70
Luminous efficiency, no less than, lm/W	130
Nominal luminaire luminous flux, lm	9 100
Dimensions, mm	
Recommended mounting height, m	8
Weight, no more than, kg	6
Circuit voltage, frequency	176 – 305 V, 50 Hz
Operating temperature, °C	- 45 ... + 60
Degree of protection	
Degree of protection	IP66
IK code/impact resistance	IK08
Protection against electric shock	I
Overvoltage resistance, up to, kV	6 (optional 10)
Correlated color temperature, K	4000-5500 (optional 2700-8300)
Color Rendering Index	> 70
Power factor, cos φ	> 0,97
Control system inputs	DKU 02-16x4-001-01 - BPM DKU 02-16x4-001-02 - RF (NEMA) DKU 02-16x4-001-03 - DALI



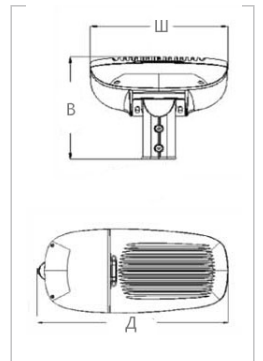
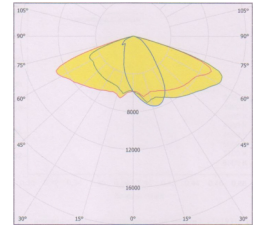
Warranty, years	5
Lifespan, hours	100 000
Body	Die-cast aluminum powder coated in RAL
Lens	Optical stabilized polycarbonate, (optional optical silicone)
Bracket	Universal swivel bracket for pole / console mounting
Cover glass	Tempered float glass
Approval mark	CE, EAC
Accordance to standards	EN 60529:1991, IEC 62262:2002, IEC 62471-2013, EN 60598-1-2013, EN 55015:2006/A1:2007/A2:2009, EN 61000-3-3-2:2006/A1:2009/A2:2009, EN 61000-4-2011, EN 61547-2013, EN 60529:1991, 2014/35/EU, 2014/30/EU, EN 62471:2008, CISPR 15-2014
Light pole diameter, mm	48 – 60
Tilt angle, °	-15 ... + 15
Connection	Techno TH387 (IP68)

CONNECTION OF THE LUMINAIRE



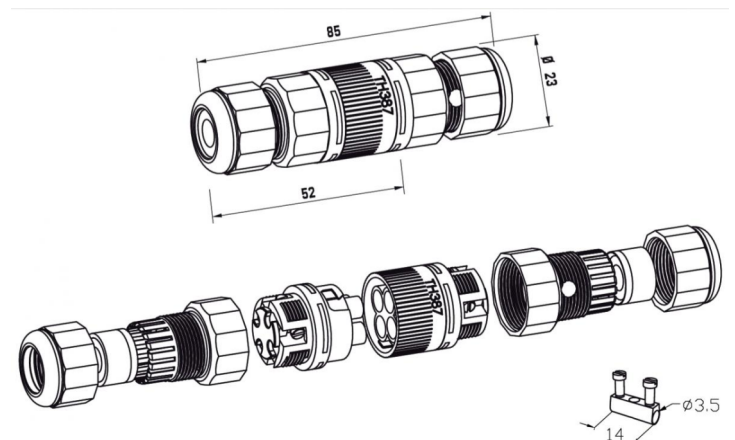
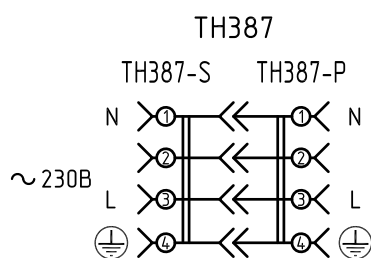


LED luminaire DKU 03-64x2-001 (-01, -02, -03, -04) UHL1 «Light»	
Parameter	Value
Polar luminous intensity curve in a vertical plane	special
Nominal power consumption, not more than, W	150
Luminous efficiency, no less than, lm/W	130
Nominal luminaire luminous flux, lm	19 500
Dimensions, mm	
Recommended mounting height, m	10
Weight, no more than, kg	7,5
Circuit voltage, frequency	176 – 305 V, 50 Hz
Operating temperature, °C	- 45 ... + 60
Degree of protection	
Degree of protection	IP66
IK code/impact resistance	IK08
Protection against electric shock	I
Overvoltage resistance, up to, kV	6 (optional 10)
Correlated color temperature, K	4000-5500 (optional 2700-8300)
Color Rendering Index	> 70
Power factor, cos φ	> 0,97
Control system inputs	DKU 02-16x4-001-01 - BPM DKU 02-16x4-001-02 - RF (NEMA) DKU 02-16x4-001-03 - DALI



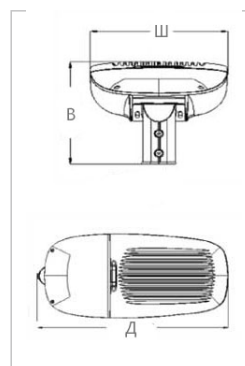
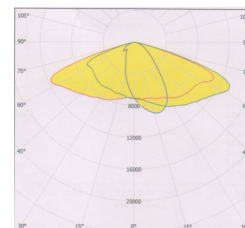
Warranty, years	5
Lifespan, hours	100 000
Body	Die-cast aluminum powder coated in RAL
Lens	Optical stabilized polycarbonate, (optional optical silicone)
Bracket	Universal swivel bracket for pole / console mounting
Cover glass	Tempered float glass
Approval mark	CE, EAC
Accordance to standards	EN 60529:1991, IEC 62262:2002, IEC 62471-2013, EN 60598-1-2013, EN 55015:2006/A1:2007/A2:2009, EN 61000-3-3-2:2006/A1:2009/A2:2009, EN 61000-4-2011, EN 61547-2013, EN 60529:1991, 2014/35/EU, 2014/30/EU, EN 62471:2008, CISPR 15-2014
Light pole diameter, mm	48 – 60
Tilt angle, °	-15 ... + 15
Connection	Techno TH387 (IP68)

CONNECTION OF THE LUMINAIRE





LED luminaire DKU 03-80x2-001 (-01, -02, -03, -04) UHL1 «Light»	
Parameter	Value
Polar luminous intensity curve in a vertical plane	special
Nominal power consumption, not more than, W	180
Luminous efficiency, no less than, lm/W	130
Nominal luminaire luminous flux, lm	23 400
Dimensions, mm	
Recommended mounting height, m	12
Weight, no more than, kg	12
Circuit voltage, frequency	176 – 305 V, 50 Hz
Operating temperature, °C	- 45 ... + 60
Technical specifications	
Degree of protection	IP66
IK code/impact resistance	IK08
Protection against electric shock	I
Overvoltage resistance, up to, kV	6 (optional 10)
Correlated color temperature, K	4000-5500 (optional 2700-8300)
Color Rendering Index	> 70
Power factor, cos φ	> 0,97
Control system inputs	DKU 02-16x4-001-01 - BPM DKU 02-16x4-001-02 - RF (NEMA) DKU 02-16x4-001-03 - DALI



Warranty, years	5
Lifespan, hours	100 000
Body	Die-cast aluminum powder coated in RAL
Lens	Optical stabilized polycarbonate, (optional optical silicone)
Bracket	Universal swivel bracket for pole / console mounting
Cover glass	Tempered float glass
Approval mark	CE, EAC
Accordance to standards	EN 60529:1991, IEC 62262:2002, IEC 62471-2013, EN 60598-1-2013, EN 55015:2006/A1:2007/A2:2009, EN 61000-3-3-2:2006/A1:2009/A2:2009, EN 61000-4-2011, EN 61547-2013, EN 60529:1991, 2014/35/EU, 2014/30/EU, EN 62471:2008, CISPR 15-2014
Light pole diameter, mm	48 – 60
Tilt angle, °	-15 ... + 15
Connection	Techno TH387 (IP68)

CONNECTION OF THE LUMINAIRE

